



广东百能堡科技有限公司
Guangdong can white castle technology co., LTD

地址:广东佛山南海罗村务庄小丰田工业区

电话:86-757-81262599 86443714 86433837

86432088 86433088

传真:86-757-86432588 86443177

邮箱:gdbainengbao201206@163.com

wangdianjidian@163.com

Address:Guangdong foshan nanhai lu village small Toyota zhuang industrial zone

Tel: 86-757-81262599 86443714 86433837

86432088 86433088

Fax: 86-757-86432588 86443177

Email: gdbainengbao201206@163.com

wangdianjidian@163.com

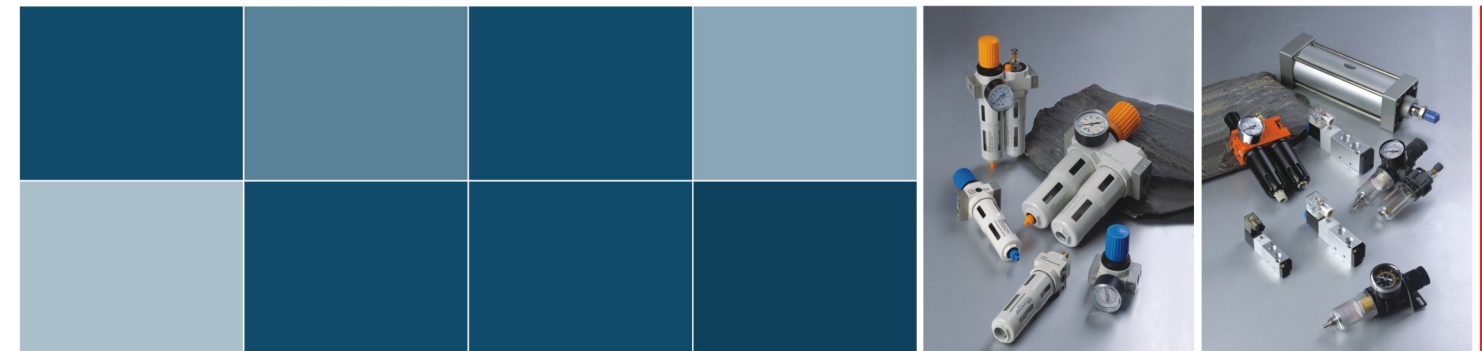
代理商

本公司保留更进外型规格的权利，以后技术外型更进，恕不另行通知。

Our company reserves the right to change the exterior and specifications.
Change the exterior and specifications without giving separate notice.

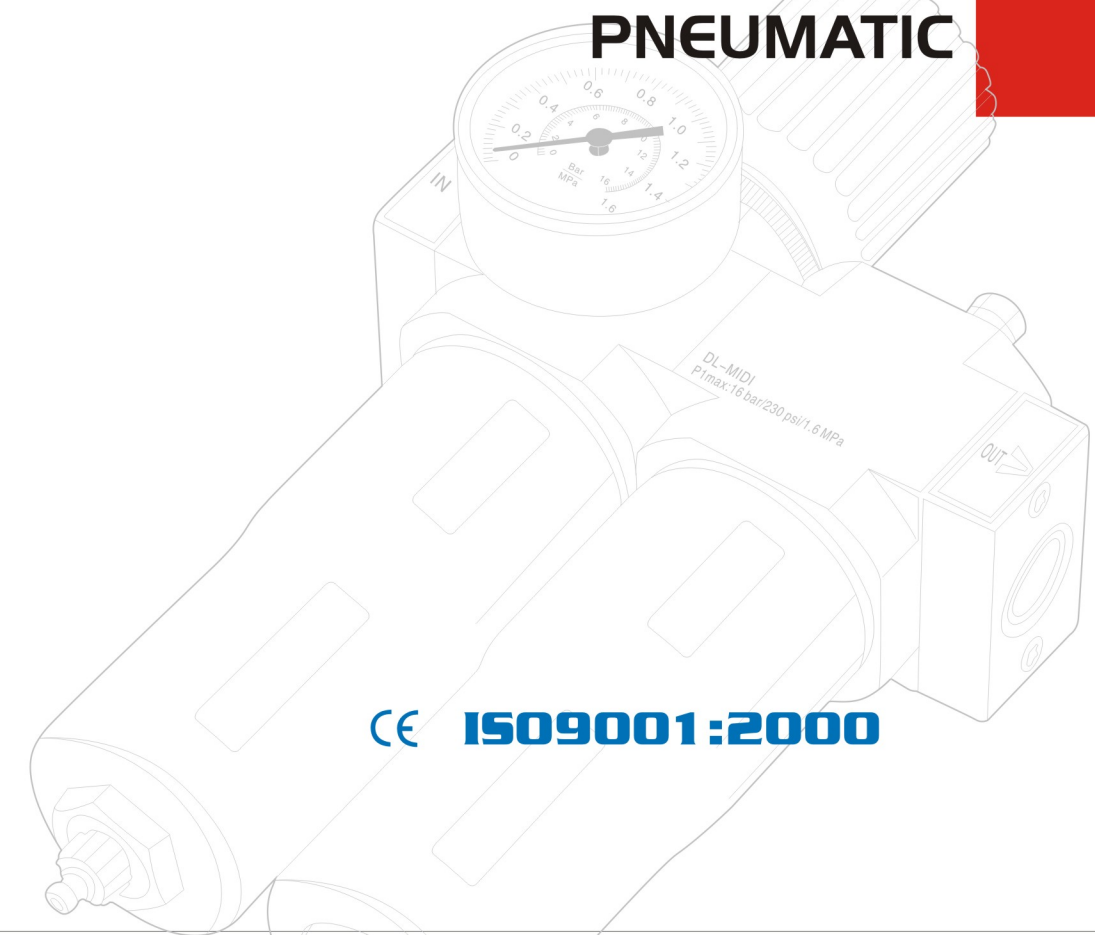
Pfannenberg

ELECTRO-TECHNOLOGY FOR INDUSTRY



BAINENGBAO

PNEUMATIC



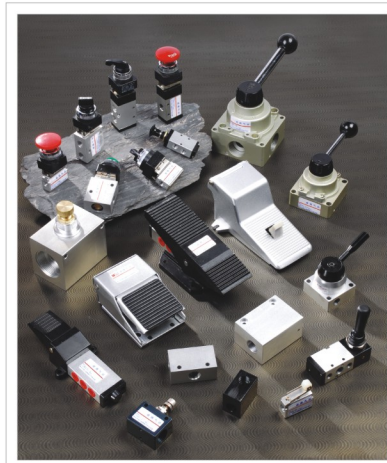
CE ISO9001:2000

Create the classic
pneumatic components

创造经典的
气动元件

产品目录 / Products Content

	气源处理件 / F、R、L、Combination
001	气源处理件D系列 / F、R、L、Combination D Series
002	气源处理件CG系列 / F、R、L、Combination CG Series
003	气源处理件A系列 / F、R、L、Combination A Series
009	气源处理件辅件 / F、R、L、Combination Accessory
010	气源处理件U系列 / F、R、L、Combination U Series
011	气源处理件A.B系列 / F、R、L、Combination A.B Series
014	气源处理件Q系列 / F、R、L、Combination Q Series
015	气源处理件S系列、39系列 / F、R、L、Combination S Series、39 Series
	电磁阀
016	3V 系列电磁阀 / 3V Series Solenoid Valve
017	4V 系列电磁阀 / 4V Series Solenoid Valve
018	4M 电磁阀系列 / 4M Series Solenoid Valve
019	4A 系列气控阀 / 4A Series Pneumatic control Valve
020	电磁阀系列 / Solenoid Valve Series
021	控制阀系列 / Control Valve Series
	气缸
026	气缸系列 / Cylinder Series
029	消声器 / Silencer
030	吹尘枪系列 / Air Gun Series
031	快插式气动管接头 / Quick Connecting Tube Fittings



气源处理元件D系列 / F、R、L、Combination D Series



型号 Model: DFR-MINI/MIDI/MAXI
D系列过滤减压阀 / D Series Pressure regulator/Filter
接管口径 Joint Port Size: 小型MINI: G1/8" G1/4"
中型MIDI: G3/8" G1/2"
大型MAXI: G3/4" G1"
工作压力 Working Pressure: 1~16bar



型号 Model: DR-MINI/MIDI/MAXI
D系列减压阀 / D Series Filter
接管口径 Joint Port Size: 小型MINI: G1/8" G1/4"
中型MIDI: G3/8" G1/2"
大型MAXI: G3/4" G1"
工作压力 Working Pressure: 1~16bar



型号 Model: DL-MINI/MIDI/MAXI
D系列油雾器 / D Series Lubricator
接管口径 Joint Port Size: 小型MINI: G1/8" G1/4"
中型MIDI: G3/8" G1/2"
大型MAXI: G3/4" G1"
工作压力 Working Pressure: 1~16bar



型号 Model: DF-MINI/MIDI/MAXI
D系列过滤器 / D Series Filter
接管口径 Joint Port Size: 小型MINI: G1/8" G1/4"
中型MIDI: G3/8" G1/2"
大型MAXI: G3/4" G1"
工作压力 Working Pressure: 1~16bar



型号 Model: DC2010/01-02-MINI/MIDI/MAXI
D系列空气过滤器组合(二联件) /
D Series Air Filter Combination(FR.L Combination)
接管口径 Joint Port Size: 小型MINI: G1/8" G1/4"
中型MIDI: G3/8" G1/2"
大型MAXI: G3/4" G1"
工作压力 Working Pressure: 1~16bar



型号 Model: 支架
D系列安装支架 / D Series Assemble bracket

气源处理元件C G 系列 / F、R、L、Combination C G Series



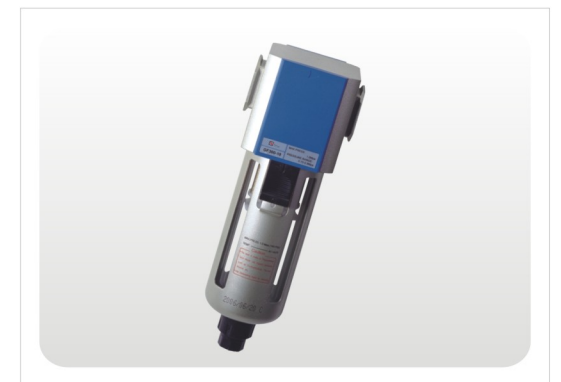
型号 Model: CGC400
CG系列空气过滤组合(二联件) /
CG Series Air Filter Combination (FR.L Combination)
接管口径 Joint Port Size: G1/2"
工作压力 Working Pressure: 1.0MPa
压力可调范围 Range of Adjustable Pressure: 0.05~0.85MPa



型号 Model: CGFC200
CG系列空气过滤组合(二联件) /
CG Series Air Filter Combination (FR.L Combination)
接管口径 Joint Port Size: G1/4"
工作压力 Working Pressure: 1.0MPa
压力可调范围 Range of Adjustable Pressure: 0.05~0.85MPa



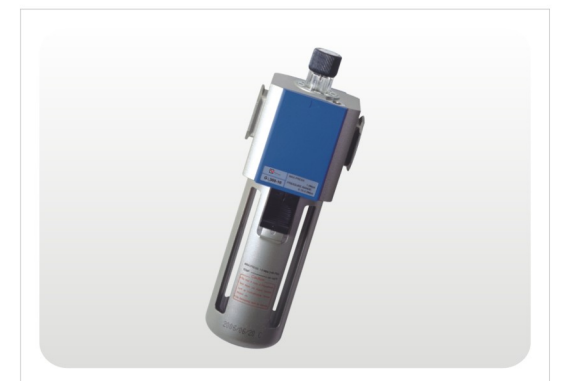
型号 Model: CGFR200
CG系列过滤减压阀 / CG Series Filter Regulator
接管口径 Joint Port Size: G1/4"
工作压力 Working Pressure: 1.0MPa
压力可调范围 Range of Adjustable Pressure: 0.05~0.85MPa



型号 Model: CGF200
CG系列过滤器 / CG Series Filter
接管口径 Joint Port Size: G1/4"
工作压力 Working Pressure: 1.0MPa



型号 Model: CGR200
CG系列减压阀 / CG Series regulator
接管口径 Joint Port Size: G1/4"
工作压力 Working Pressure: 1.0MPa
压力可调范围 Range of Adjustable Pressure: 0.05~0.85MPa



型号 Model: CGL200
CG系列给油器 / CG Series oil feeder
接管口径 Joint Port Size: G1/4"
工作压力 Working Pressure: 1.0MPa

气源处理元件A系列 / F、R、L、Combination A Series



型号 Model: AC1000-M5
A系列空气过滤组合(三联件) / A Series
Air Filter Combination (F.R.L Combinaton)
接管口径 Joint Port Size: M5
工作压力 Working Pressure: 0.95MPa
压力可调范围 Range of Adjustable Pressure: 0.05~0.85MPa



型号 Model: AC2000-01/02
A系列空气过滤组合(三联件) / A Series
Air Filter Combination (F.R.L Combinaton)
接管口径 Joint Port Size: 01: G1/8" 02: G1/4"
工作压力 Working Pressure: 1.0MPa
压力可调范围 Range of Adjustable Pressure: 0.05~0.85MPa



型号 Model: AC3000-02/03
A系列空气过滤组合(三联件) / A Series
Air Filter Combination (F.R.L Combinaton)
接管口径 Joint Port Size: 02: G1/4" 03: G3/8"
工作压力 Working Pressure: 1.0MPa
压力可调范围 Range of Adjustable Pressure: 0.05~0.85MPa



型号 Model: AC4000-03/04/06
A系列空气过滤组合(三联件) / A Series
Air Filter Combination (F.R.L Combinaton)
接管口径 Joint Port Size: 03: G3/8" 04: G1/2" 06: G3/4"
工作压力 Working Pressure: 1.0MPa
压力可调范围 Range of Adjustable Pressure: 0.05~0.85MPa



型号 Model: AC5000-06/10
A系列空气过滤组合(三联件) / A Series
Air Filter Combination (F.R.L Combinaton)
接管口径 Joint Port Size: 06: G3/4" 10: G1"
工作压力 Working Pressure: 1.0MPa
压力可调范围 Range of Adjustable Pressure: 0.05~0.85MPa



型号 Model: AC1010-M5
A系列空气过滤组合(二联件) / A Series
Air Filter Combination (FR.L Combinaton)
接管口径 Joint Port Size: M5
工作压力 Working Pressure: 0.95MPa
压力可调范围 Range of Adjustable Pressure: 0.05~0.85MPa

气源处理元件A系列 / F、R、L、Combination A Series



型号 Model: AC2010-01/02
A系列空气过滤组合(二联件) / A Series
Air Filter Combination (FR.L Combinaton)
接管口径 Joint Port Size: 01: G1/8" 02: G1/4"
工作压力 Working Pressure: 1.0MPa
压力可调范围 Range of Adjustable Pressure: 0.05~0.85MPa



型号 Model: MAC2010-01/02
A系列空气过滤组合(二联件) / A Series
Air Filter Combination (FR.L Combinaton)
接管口径 Joint Port Size: 01: G1/8" 02: G1/4"
工作压力 Working Pressure: 1MPa
压力可调范围 Range of Adjustable Pressure: 0.05~0.85MPa



型号 Model: AC2010-01A/02A
A系列空气过滤组合(二联件) / A Series
Air Filter Combination (FR.L Combinaton)
接管口径 Joint Port Size: 01A: G1/8" 02A: G1/4"
工作压力 Working Pressure: 1MPa
压力可调范围 Range of Adjustable Pressure: 0.05~0.85MPa



型号 Model: KAC2010-01/02
A系列空气过滤组合(二联件) / A Series
Air Filter Combination (FR.L Combinaton)
接管口径 Joint Port Size: 01: G1/8" 02: G1/4"
工作压力 Working Pressure: 1MPa
压力可调范围 Range of Adjustable Pressure: 0.05~0.85MPa



型号 Model: CJAC2010-01/02
A系列空气过滤组合(二联件) / A Series
Air Filter Combination (FR.L Combinaton)
接管口径 Joint Port Size: 01B: G1/8" 02B: G1/4"
工作压力 Working Pressure: 1MPa
压力可调范围 Range of Adjustable Pressure: 0.05~0.85MPa



型号 Model: AC3010-02/03
A系列空气过滤组合(二联件) / A Series
Air Filter Combination (FR.L Combinaton)
接管口径 Joint Port Size: 02: G1/4" 03: G3/8"
工作压力 Working Pressure: 1.0MPa
压力可调范围 Range of Adjustable Pressure: 0.05~0.85MPa

气源处理元件A系列 / F、R、L、Combination A Series



型号 Model: CJAC3010-02/03
A系列空气过滤组合(二联件) / A Series
Air Filter Combination (FR.L Combinaton)
接管口径 Joint Port Size: 02B: G1/4" 03B: G3/8"
工作压力 Working Pressure: 1MPa
可调范围 Adjustable Range: 0.05~0.85MPa



型号 Model: AC4010-03/04/06
A系列空气过滤组合(二联件) / A Series
Air Filter Combination (FR.L Combinaton)
接管口径 Joint Port Size: 03: G3/8" 04: G1/2"
06: G3/4"
工作压力 Working Pressure: 1.0MPa
可调范围 Adjustable Range: 0.05~0.85MPa



型号 Model: CJAC4010-03/04/06
A系列空气过滤组合(二联件) / A Series
Air Filter Combination (FR.L Combinaton)
接管口径 Joint Port Size: 03: G3/8" 04: G1/2"
06: G3/4"
工作压力 Working Pressure: 1.0MPa
可调范围 Adjustable Range: 0.05~0.85MPa



型号 Model: CJAC4010-03B/04B/06B
A系列空气过滤组合(二联件) / A Series
Air Filter Combination (FR.L Combinaton)
接管口径 Joint Port Size: 03B: G3/8" 04B: G1/2"
06B: G3/4"
工作压力 Working Pressure: 1MPa
可调范围 Adjustable Range: 0.05~0.85MPa



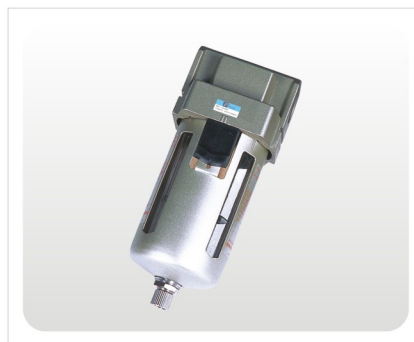
型号 Model: AC5010-06/10
A系列空气过滤组合(二联件) / A Series
Air Filter Combination (FR.L Combinaton)
接管口径 Joint Port Size: 06: G3/4" 10: G1"
工作压力 Working Pressure: 1.0MPa
可调范围 Adjustable Range: 0.05~0.85MPa



型号 Model: AF2000-01/02
A系列空气过滤器 / A Series Air Filter
接管口径 Joint Port Size: 01: G1/8" 02: G1/4"
工作压力 Working Pressure: 1.0MPa



型号 Model: AF3000-02/03
A系列空气过滤器 / A Series Air Filter
接管口径 Joint Port Size: 02: G1/4" 03: G3/8"
工作压力 Working Pressure: 1.0MPa



型号 Model: AF4000-03/04/06
A系列空气过滤器 / A Series Air Filter
接管口径 Joint Port Size: 03: G3/8" 04: G1/2"
06: G3/4"
工作压力 Working Pressure: 1.0MPa



型号 Model: AF5000-06/10
A系列空气过滤器 / A Series Air Filter
接管口径 Joint Port Size: 06: G3/4" 10: G1"
工作压力 Working Pressure: 1.0MPa

气源处理元件A系列 / F、R、L、Combination A Series



型号 Model: AR2000-01/02
A系列减压阀 / A Series regulator
接管口径 Joint Port Size: 01: G1/8" 02: G1/4"
工作压力 Working Pressure: 1.0MPa
可调范围 Adjustable Range: 0.05~0.85MPa



型号 Model: AR3000-02/03
A系列减压阀 / A Series regulator
接管口径 Joint Port Size: 02: G1/4" 03: G3/8"
工作压力 Working Pressure: 1.0MPa
可调范围 Adjustable Range: 0.05~0.85MPa



型号 Model: AR4000-03/04/06
A系列减压阀 / A Series regulator
接管口径 Joint Port Size: 03: G3/8" 04: G1/2"
06: G3/4"
工作压力 Working Pressure: 1.0MPa
可调范围 Adjustable Range: 0.05~0.85MPa



型号 Model: AR5000-06/10
A系列减压阀 / A Series regulator
接管口径 Joint Port Size: 06: G3/4" 10: G1"
工作压力 Working Pressure: 1.0MPa
可调范围 Adjustable Range: 0.05~0.85MPa



型号 Model: AL2000-01/02
A系列油雾器 / A Series Lubricator
接管口径 Joint Port Size: 01: G1/8" 02: G1/4"
工作压力 Working Pressure: 1.0MPa



型号 Model: AL3000-02/03
A系列油雾器 / A Series Lubricator
接管口径 Joint Port Size: 02: G1/4" 03: G3/8"
工作压力 Working Pressure: 1.0MPa



型号 Model: AL4000-03/04/06
A系列油雾器 / A Series Lubricator
接管口径 Joint Port Size: 03: G3/8" 04: G1/2"
06: G3/4"
工作压力 Working Pressure: 1.0MPa



型号 Model: AL5000-06/10
A系列油雾器 / A Series Lubricator
接管口径 Joint Port Size: 06: G3/4" 10: G1"
工作压力 Working Pressure: 1.0MPa



型号 Model: AW2000-01/02
A系列过滤减压阀 / A Series Filter Regulator
接管口径 Joint Port Size: 01: G1/8" 02: G1/4"
工作压力 Working Pressure: 1.0MPa
可调范围 Adjustable Range: 0.05~0.85MPa

气源处理元件A系列 / F、R、L、Combination A Series



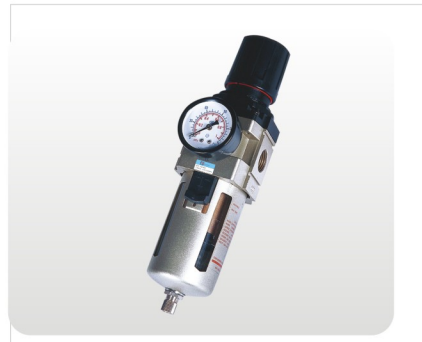
型号 Model: UAW2000-01/02
A系列过滤减压阀 / A Series Filter Regulator
接管口径 Joint Port Size: 01: G1/8" 02: G1/4"
工作压力 Working Pressure: 1.0MPa
可调范围 Adjustable Range: 0.05~0.85MPa



型号 Model: KAW2000-01/02
A系列过滤减压阀 / A Series Filter Regulator
接管口径 Joint Port Size: 01: G1/8" 02: G1/4"
工作压力 Working Pressure: 1.0MPa
可调范围 Adjustable Range: 0.05~0.85MPa



型号 Model: MAW2000-01/02
A系列过滤减压阀 / A Series Filter Regulator
接管口径 Joint Port Size: 01: G1/8" 02: G1/4"
工作压力 Working Pressure: 1.0MPa
可调范围 Adjustable Range: 0.05~0.85MPa



型号 Model: AW3000-02/03
A系列过滤减压阀 / A Series Filter Regulator
接管口径 Joint Port Size: 02: G1/4" 03: G3/8"
工作压力 Working Pressure: 1.0MPa
可调范围 Adjustable Range: 0.05~0.85MPa



型号 Model: AW4000-03/04/06
A系列过滤减压阀 / A Series Filter Regulator
接管口径 Joint Port Size: 03: G3/8" 04: G1/2"
06: G3/4"
工作压力 Working Pressure: 1.0MPa
可调范围 Adjustable Range: 0.05~0.85MPa



型号 Model: AW5000-06/10
A系列过滤减压阀 / A Series Filter Regulator
接管口径 Joint Port Size: 06: G3/4" 10: G1"
工作压力 Working Pressure: 1.0MPa
可调范围 Adjustable Range: 0.05~0.85MPa



型号 Model: CJAW2000-01/02
A系列过滤减压阀 / A Series Filter Regulator
接管口径 Joint Port Size: 01: G1/8" 02: G1/4"
工作压力 Working Pressure: 1.0MPa
可调范围 Adjustable Range: 0.05~0.85MPa



型号 Model: CJAW3000-02/03
A系列过滤减压阀 / A Series Filter Regulator
接管口径 Joint Port Size: 02: G1/4" 03: G3/8"
工作压力 Working Pressure: 1.0MPa
可调范围 Adjustable Range: 0.05~0.85MPa



型号 Model: CJAW4000-03/04/06
A系列过滤减压阀 / A Series Filter Regulator
接管口径 Joint Port Size: 03: G3/8" 04: G1/2"
06: G3/4"
工作压力 Working Pressure: 1.0MPa
可调范围 Adjustable Range: 0.05~0.85MPa

气源处理元件A系列 / F、R、L、Combination A Series



型号 Model: CJAW5000-06/10
A系列过滤减压阀 / A Series Filter Regulator
接管口径 Joint Port Size: 06: G3/4" 10: G1"
工作压力 Working Pressure: 1.0MPa
可调范围 Adjustable Range: 0.05~0.85MPa



型号 Model: CJAL2000-01/02
A系列油雾器 / A Series Lubricator
接管口径 Joint Port Size: 01: G1/8" 02: G1/4"
工作压力 Working Pressure: 1.0MPa



型号 Model: CJAL3000-02/03
A系列油雾器 / A Series Lubricator
接管口径 Joint Port Size: 02: G1/4" 03: G3/8"
工作压力 Working Pressure: 1.0MPa



型号 Model: CJAL4000-03/04/06
A系列油雾器 / A Series Lubricator
接管口径 Joint Port Size: 03: G3/8" 04: G1/2"
06: G3/4"
工作压力 Working Pressure: 1.0MPa



型号 Model: CJAL5000-06/10
A系列油雾器 / A Series Lubricator
接管口径 Joint Port Size: 06: G3/4" 10: G1"
工作压力 Working Pressure: 1.0MPa



型号 Model: CJAF2000-01/02
A系列空气过滤器 / A Series Air Filter
接管口径 Joint Port Size: 01: G1/8" 02: G1/4"
工作压力 Working Pressure: 1.0MPa



型号 Model: CJAF3000-02/03
A系列空气过滤器 / A Series Air Filter
接管口径 Joint Port Size: 02: G1/4" 03: G3/8"
工作压力 Working Pressure: 1.0MPa



型号 Model: CJAF4000-03/04/06
A系列空气过滤器 / A Series Air Filter
接管口径 Joint Port Size: 03: G3/8" 04: G1/2"
06: G3/4"
工作压力 Working Pressure: 1.0MPa

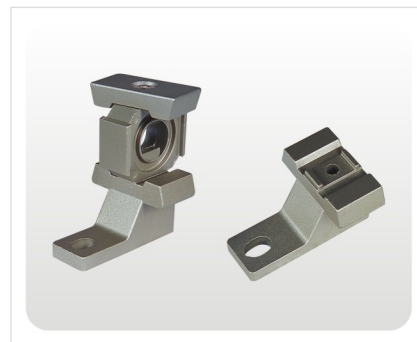


型号 Model: CJAF5000-06/10
A系列空气过滤器 / A Series Air Filter
接管口径 Joint Port Size: 06: G3/4" 10: G1"
工作压力 Working Pressure: 1.0MPa

气源处理元件辅件 / F、R、L、Combination Accessory



型号 Model: T型隔板
T型隔板 / T-Type Bracket.spacer



型号 Model: L型托架
附件—L型托架 / 连L型托架的隔板
Accessories—L-Type bracket / Spacer with L-Type bracket



型号 Model: T型托架
附件—T型托架 / 连T型托架隔板
Accessories—T-Type bracket / Spacer with T-Type bracket



型号 Model: 20/30/40型托架
附件—20型托架 / Accessories—20 Type bracket 用于AR、AW



型号 Model: 20/30/40/50型托架
附件—40型托架 / Accessories—40 Type bracket 用于AF、AL



型号 Model: AD402-02/03/04
自动排水器 / Auto Drain
接管口径 Joint Port Size: 02: G1/4" 03: G3/8" 04: G1/2"
工作压力 Working Pressure: 1.0MPa



型号 Model: CAD402-X-02/03/04
自动排水器 / Auto Drainer
接管口径 Joint Port Size: 02: G1/4" 03: G3/8" 04: G1/2"
工作压力 Working Pressure: 1.0MPa



型号 Model: CADV-400-G12 / CADV-MA-G14
自动排水阀 / Auto Drain Valve



型号 Model: ZDFS
ZDFS 自动放水器 / ZDFS Auto Drain
接管口径 Joint Port Size: G1/8"

气源处理元件U系列 / F、R、L、Combination U Series



型号 Model: UR-02/03/04
U系列减压阀 / U Series Regulator
接管口径 Joint Port Size: 02: G1/4" 03: G3/8" 04: G1/2"
工作压力 Working Pressure: 1.0MPa
可调范围 Adjustable Range: 0.05~0.85MPa



型号 Model: UF-02/03/04
U系列过滤减压阀 / U Series Regulator
接管口径 Joint Port Size: 02: G1/4" 03: G3/8" 04: G1/2"
工作压力 Working Pressure: 1.0MPa



型号 Model: UFR-02/03/04
U系列过滤减压阀 / U Series Regulator
接管口径 Joint Port Size: 02: G1/4" 03: G3/8" 04: G1/2"
工作压力 Working Pressure: 1.0MPa
可调范围 Adjustable Range: 0.05~0.85MPa



型号 Model: UL-02/03/04
U系列过滤减压阀 / U Series Regulator
接管口径 Joint Port Size: 02: G1/4" 03: G3/8" 04: G1/2"
工作压力 Working Pressure: 1.0MPa



型号 Model: UFR/L-02/03/04
U系列空气过滤组合(二联件) / U Series Air Filter Combination (F.R.L Combination)
接管口径 Joint Port Size: 02: G1/4" 03: G3/8" 04: G1/2"
工作压力 Working Pressure: 1.0MPa
可调范围 Adjustable Range: 0.05~0.85MPa



型号 Model: UFRL-02/03/04
U系列空气过滤组合(三联件) / U Series Air Filter Combination (F.R.L Combination)
接管口径 Joint Port Size: 02: G1/4" 03: G3/8" 04: G1/2"
工作压力 Working Pressure: 1.0MPa
可调范围 Adjustable Range: 0.05~0.85MPa



型号 Model: UFR/L-06/10
U系列空气过滤组合(二联件) / U Series Air Filter Combination (F.R.L Combination)
接管口径 Joint Port Size: 06: G3/4" 10: G1"
工作压力 Working Pressure: 1MPa
可调范围 Adjustable Range: 0.05~0.85MPa



型号 Model: UFRL-06/10
U系列空气过滤组合(三联件) / U Series Air Filter Combination (F.R.L Combination)
接管口径 Joint Port Size: 06: G3/4" 10: G1"
工作压力 Working Pressure: 1MPa
可调范围 Adjustable Range: 0.05~0.85MPa

气源处理元件A B系列辅件 / F、R、L、Combination A B Series Accessory



型号 Model: AC1500/2000
AC 系列空气过滤器组合(三联件) / AC Series Three-point Combination(F.R.L. Combination)
接管口径 Joint Port Size: 1500: G1/8" 2000: G1/4"
工作压力 Working Pressure: 0.95MPa
可调范围 Adjustable Range: 0.05~0.85MPa



型号 Model: BC2000/3000/4000
BC 系列空气过滤器组合(三联件) / BC Series Three-point Combination(F.R.L. Combination)
接管口径 Joint Port Size: 2000: G1/4" 3000: G3/8" 4000: G1/2"
工作压力 Working Pressure: 0.95MPa
可调范围 Adjustable Range: 0.05~0.85MPa



型号 Model: AFC1500/2000
AFC 系列空气过滤器组合(二联件) / AFC Series Two-point Combination(F.R.L. Combination)
接管口径 Joint Port Size: 1500: G1/8" 2000: G1/4"
工作压力 Working Pressure: 0.95MPa
可调范围 Adjustable Range: 0.05~0.85MPa



型号 Model: BFC2000/3000/4000
BFC 系列空气过滤器组合(二联件) / BFC Series Two-point Combination(F.R.L. Combination)
接管口径 Joint Port Size: 2000: G1/4" 3000: G3/8" 4000: G1/2"
工作压力 Working Pressure: 0.95MPa
可调范围 Adjustable Range: 0.05~0.85MPa



型号 Model: AF1500/2000
AF 系列过滤器 / AF Series Filter
接管口径 Joint Port Size: 1500: G1/8" 2000: G1/4"
工作压力 Working Pressure: 0.95MPa



型号 Model: BF2000/3000/4000
BF 系列过滤器 / BF Series Filter
接管口径 Joint Port Size: 2000: G1/4" 3000: G3/8" 4000: G1/2"
工作压力 Working Pressure: 1.0MPa



型号 Model: AR1500/2000
AR 系列调压阀 / AR Series Regulator
接管口径 Joint Port Size: 1500: G1/8" 2000: G1/4"
工作压力 Working Pressure: 0.95MPa
可调范围 Adjustable Range: 0.05~0.85MPa



型号 Model: BR2000/3000/4000
BR 系列调压阀 / BR Series Regulator
接管口径 Joint Port Size: 2000: G1/4" 3000: G3/8" 4000: G1/2"
工作压力 Working Pressure: 0.95MPa
可调范围 Adjustable Range: 0.05~0.85MPa



型号 Model: AL1500/2000
AL 系列油雾器 / AL Series Lubricator
接管口径 Joint Port Size: 1500: G1/8" 2000: G1/4"
工作压力 Working Pressure: 1.0MPa

气源处理元件A B系列辅件 / F、R、L、Combination A B Series Accessory



型号 Model: BL2000/3000/4000
BL 系列油雾器 / BL Series Lubricator
接管口径 Joint Port Size: 2000: G1/4" 3000: G3/8" 4000: G1/2"
工作压力 Working Pressure: 1.0MPa



型号 Model: AFR1500/2000
AFR 系列过滤调压阀 / AFR Series Filter & Regulator
接管口径 Joint Port Size: 1500: G1/8" 2000: G1/4"
工作压力 Working Pressure: 1.0MPa
可调范围 Adjustable Range: 0.05~0.85MPa



型号 Model: BFR2000/3000/4000
BFR 系列过滤调压阀 / BFR Series Filter & Regulator
接管口径 Joint Port Size: 2000: G1/4" 3000: G3/8" 4000: G1/2"
工作压力 Working Pressure: 1.0MPa
可调范围 Adjustable Range: 0.05~0.85MPa



型号 Model: AC1500A/2000A
A 系列空气过滤器组合(三联件) / A Series Air Filter Combination (F.R.L. Combination)
接管口径 Joint Port Size: 1500: G1/8" 2000: G1/4"
工作压力 Working Pressure: 1.0MPa
可调范围 Adjustable Range: 0.05~0.85MPa



型号 Model: BC2000A/3000A/4000A
A 系列空气过滤器组合(三联件) / A Series Air Filter Combination (F.R.L. Combination)
接管口径 Joint Port Size: 2000: G1/4" 3000: G3/8" 4000: G1/2"
工作压力 Working Pressure: 1.0MPa
可调范围 Adjustable Range: 0.05~0.85MPa



型号 Model: AFC1500A/2000A
A 系列空气过滤器组合(二联件) / A Series Air Filter Combination (F.R.L. Combination)
接管口径 Joint Port Size: 1500: G1/8" 2000: G1/4"
工作压力 Working Pressure: 0.95MPa
可调范围 Adjustable Range: 0.05~0.85MPa



型号 Model: AFC1500U/2000U
A 系列空气过滤器组合(二联件) / A Series Air Filter Combination (F.R.L. Combination)
接管口径 Joint Port Size: 1500: G1/8" 2000: G1/4"
工作压力 Working Pressure: 1.0MPa
可调范围 Adjustable Range: 0.05~0.85MPa



型号 Model: BFC2000A/3000A/4000A
BFC 系列空气过滤器组合(二联件) / BFC Series Two-point Combination(F.R.L. Combination)
接管口径 Joint Port Size: 2000: G1/4" 3000: G3/8" 4000: G1/2"
工作压力 Working Pressure: 1.0MPa
可调范围 Adjustable Range: 0.05~0.85MPa



型号 Model: AL2000A
A 系列油雾器 / A Series Lubricator
接管口径 Joint Port Size: G1/8"
工作压力 Working Pressure: 1.0MPa

气源处理元件A B系列辅件 / F、R、L、Combination A B Series Accessory



型号 Model: BL2000A/3000A/4000A
BL 系列油雾器 / BL Series Lubricator
接管口径 Joint Port Size: 2000: G1/4" 3000: G3/8" 4000: G1/2"
工作压力 Working Pressure: 1.0MPa



型号 Model: AFR1500A/2000A
AFR 系列过滤调压阀 / AFR Series Filter & Regulator
接管口径 Joint Port Size: 1500: G3/8" 2000: G1/4"
工作压力 Working Pressure: 1MPa
可调范围 Adjustable Range: 0.05~0.85MPa



型号 Model: BFR2000A/3000A/4000A
BFR 系列过滤调压阀 / BFR Series Filter & Regulator
接管口径 Joint Port Size: 2000: G1/4" 3000: G3/8" 4000: G1/2"
工作压力 Working Pressure: 1.0MPa
可调范围 Adjustable Range: 0.05~0.85MPa



型号 Model: AR1500A/2000A
BR 系列减压阀 / BR Series Regulator
接管口径 Joint Port Size: 1500: G3/8" 2000: G1/4"
工作压力 Working Pressure: 1.0MPa
可调范围 Adjustable Range: 0.05~0.85MPa



型号 Model: AR1500B
BR 系列减压阀 / BR Series Regulator
接管口径 Joint Port Size: G1/8"
工作压力 Working Pressure: 1.0MPa
可调范围 Adjustable Range: 0.05~0.85MPa



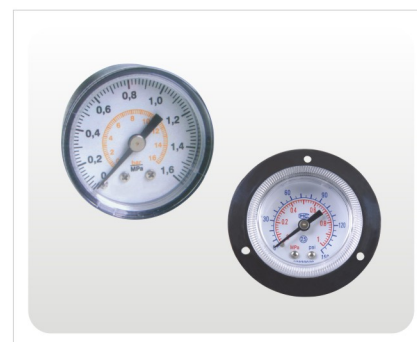
型号 Model: BR2000A/3000A/4000A
BR 系列减压阀 / BR Series Regulator
接管口径 Joint Port Size: 2000: G1/4" 3000: G3/8" 4000: G1/2"
工作压力 Working Pressure: 1.0MPa
可调范围 Adjustable Range: 0.05~0.85MPa



型号 Model: C104-C
C 系列空气过滤器组合 / C series air filter combination
接管口径 Joint Port Size: G1/4"
工作压力 Working Pressure: 1.0MPa
可调范围 Adjustable Range: 0.05~0.85MPa



型号 Model: NAR200
NAR 系列调压阀 / NAR Series Regulator
接管口径 Joint Port Size: G1/4"
工作压力 Working Pressure: 0.8MPa
可调范围 Adjustable Range: 0.05~0.85MPa



型号 Model: Y40/Y50/Y60
压力表 / Manometer
接管口径 Joint Port Size: G1/8" G1/4"

气源处理元件Q系列 / F、R、L、Combination Q Series



型号 Model: QTYH-8/10/15/20/25
H 系列高压气源处理件 / H series High Pressure Air Source Treatment Unit
接管口径 Joint Port Size: 8: G1/4" 10: 3/8" 15: G1/2" 20: G3/4" 25: G1"
工作压力 Working Pressure: 3.5MPa
可调范围 Adjustable Range: 0.05~3.5MPa



型号 Model: QSLH-8/10/15/20/25
H 系列高压气源处理件 / H series High Pressure Air Source Treatment Unit
接管口径 Joint Port Size: 8: G1/4" 10: 3/8" 15: G1/2" 20: G3/4" 25: G1"
工作压力 Working Pressure: 3.5MPa



型号 Model: QTY-8/10/15/20/25/32/40/50
QTY 减压阀 / QTY reduction valve
接管口径 Joint Port Size: 08: G1/4" 10: G3/8" 15: G1/2" 20: G3/4" 25: G1" 32: G1-1/4" 40: G1-1/2" 50: G2"
工作压力 Working Pressure: 1MPa
可调范围 Adjustable Range: 0.05~0.85MPa



型号 Model: QIU-8/10/15/20/25/32/40/50
QIU 油雾器 / QIU Series Lubricator
接管口径 Joint Port Size: 08: G1/4" 10: G3/8" 15: G1/2" 20: G3/4" 25: G1" 32: G1-1/4" 40: G1-1/2" 50: G2"
工作压力 Working Pressure: 1MPa



型号 Model: QSL-8/10/15/20/25/32/40/50
QSL 过滤器 / QSL Series Filter
接管口径 Joint Port Size: 08: G1/4" 10: G3/8" 15: G1/2" 20: G3/4" 25: G1" 32: G1-1/4" 40: G1-1/2" 50: G2"
工作压力 Working Pressure: 1MPa



型号 Model: QIU-40A
QIU 油雾器 / QIU Series Lubricator
接管口径 Joint Port Size: G1-1/2"
工作压力 Working Pressure: 1MPa



型号 Model: QSL-32A/40A/50A
QSL 过滤器(防爆型) / QSL Series Filter (Explosion-proof type)
接管口径 Joint Port Size: 32A: G1-1/4" 40A: G1-1/2" 50A: G2"
工作压力 Working Pressure: 1MPa



型号 Model: QSL-40B
QSL 过滤器(防爆型) / QSL Series Filter (Explosion-proof type)
接管口径 Joint Port Size: G1-1/2"
工作压力 Working Pressure: 1MPa



型号 Model: CFC-01/02
T 系列空气过滤器组合 / T Series air filter combination
接管口径 Joint Port Size: 01: G1/8" 02: G1/4"
工作压力 Working Pressure: 1.6MPa
可调范围 Adjustable Range: 0.05~0.85MPa

气源处理元件S系列、39系列 / F、R、L、Combination S Series、39 Series



型号 Model: SFC200/300/400
SFC 气源处理件 / SFC Air Source Treatment unit
接管口径 Joint Port Size: 200: G1/4" 300: G3/8"
400: G1/2"
工作压力 Working Pressure: 1.0MPa
可调范围 Adjustable Range: 0.05~0.85MPa



型号 Model: SL200/300/400
SL油雾器 / SL Lubricator
接管口径 Joint Port Size: 200: G1/4" 300: G3/8"
400: G1/2"
工作压力 Working Pressure: 1.0MPa



型号 Model: SFR200/300/400
SFR 过滤调压阀 / SFR Regulator & Filter
接管口径 Joint Port Size: 200: G1/4" 300: G 3/8"
400: G1/2"
工作压力 Working Pressure: 1.0MPa
可调范围 Adjustable Range: 0.05~0.85MPa



型号 Model: 397-08/15/25
397系列 过滤减压阀 / Series 397 Filter-Pressure Reducer
接管口径 Joint Port Size: 08: G1/4" 15: G1/2"
25: G1"
工作压力 Working Pressure: 1MPa
可调范围 Adjustable Range: 0.05~0.85MPa



型号 Model: 398-08/15/25
398系列 气源处理三联件 / Series 398 -Three Combination
接管口径 Joint Port Size: 08: G1/4" 15: G1/2"
25: G1"
工作压力 Working Pressure: 1MPa
可调范围 Adjustable Range: 0.05~0.85MPa



型号 Model: 399-08/15/25
399系列 气源处理二联件 / Series 399 -Two Combination
接管口径 Joint Port Size: 08: G1/4" 15: G1/2"
25: G1"
工作压力 Working Pressure: 1MPa
可调范围 Adjustable Range: 0.05~0.85MPa



型号 Model: HSV-01/02/03/04
HSV手滑阀 / HSV Slip Valve
接管口径 Joint Port Size: 01: G1/8" 02: G1/4"
03: G3/8" 04: G1/2"
工作压力 Working Pressure: 0.15~1.0MPa



型号 Model: B-003/004
油雾器、过滤器 / Lubricator, Filter
接管口径 Joint Port Size: G1/4"
工作压力 Working Pressure: 0.8MPa



型号 Model: B-002
流量调节器 / Flow Adjust
接管口径 Joint Port Size: G1/4"
可调范围 Adjustable Range: 0.05~1.0MPa

3V 系列电磁阀 / 3V Series Solenoid Valve



型号 Model: 3V110-M5/06
3V100系列电磁阀 / 3V100 Series Solenoid Valve
接管口径 Joint Port Size: M5: M5x0.8 06: G1/8"
工作压力 Working Pressure: 0.15~0.85MPa



型号 Model: 3V120-M5/06
3V100 系列电磁阀 / 3V100 Series Solenoid Valve
接管口径 Joint Port Size: M5: M5x0.8 06: G1/8"
工作压力 Working Pressure: 0.15~0.85MPa



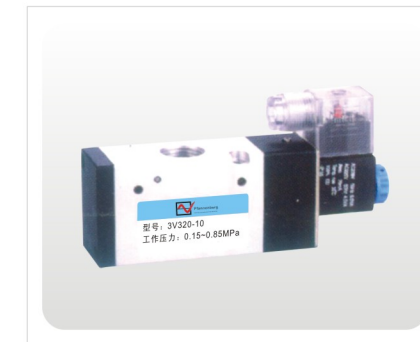
型号 Model: 3V210-06/08
3V200系列电磁阀 / 3V200 Series Solenoid Valve
接管口径 Joint Port Size: 06: G1/8" 08: G1/4"
工作压力 Working Pressure: 0.15~0.85MPa



型号 Model: 3V220-06/08
3V200系列电磁阀 / 3V200 Series Solenoid Valve
接管口径 Joint Port Size: 06: G1/8" 08: G1/4"
工作压力 Working Pressure: 0.15~0.85MPa



型号 Model: 3V310-08/10
3V300系列电磁阀 / 3V300 Series Solenoid Valve
接管口径 Joint Port Size: 08: G1/4" 10: G3/8"
工作压力 Working Pressure: 0.15~0.85MPa



型号 Model: 3V320-08/10
3V300系列电磁阀 / 3V300 Series Solenoid Valve
接管口径 Joint Port Size: 10: G1/4" 15: G3/8"
工作压力 Working Pressure: 0.15~0.85MPa



型号 Model: 3V410-10/15
3V400系列电磁阀 / 3V400 Series Solenoid Valve
接管口径 Joint Port Size: 10: G3/8" 15: G1/2"
工作压力 Working Pressure: 0.15~0.85MPa



型号 Model: 3V420-10/15
3V400系列电磁阀 / 3V400 Series Solenoid Valve
接管口径 Joint Port Size: 10: G3/8" 15: G1/2"
工作压力 Working Pressure: 0.15~0.85MPa

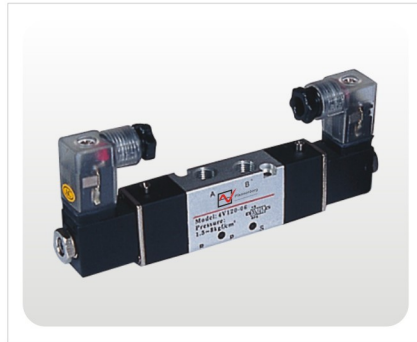


型号 Model: 200M-B/200M-□F
100-400 系列底座 / 100-400 Series Base

4V 系列电磁阀 / 4V Series Solenoid Valve



型号 Model: 4V110-M5/06
4V100系列电磁阀 / 4V100 Series Solenoid Valve
接管口径 Joint Port Size: M5: M5x0.8 06: G1/8"
工作压力 Working Pressure: 0.15~0.85MPa



型号 Model: 4V120-M5/06
4V100系列电磁阀 / 4V100 Series Solenoid Valve
接管口径 Joint Port Size: M5: M5x0.8 06: G1/8"
工作压力 Working Pressure: 0.15~0.85MPa



型号 Model: 4V130-M5/06 C/E/P
4V100系列电磁阀 / 4V100 Series Solenoid Valve
接管口径 Joint Port Size: M5: M5x0.8 06: G1/8"
工作压力 Working Pressure: 0.15~0.85MPa
C: Close Type E: Exhaust Type P: Pressure Type



型号 Model: 4V210-06/08
4V200系列电磁阀 / 4V200 Series Solenoid Valve
接管口径 Joint Port Size: 06: G1/8" 08: G1/4"
工作压力 Working Pressure: 0.15~0.85MPa



型号 Model: 4V220-06/08
4V200系列电磁阀 / 4V200 Series Solenoid Valve
接管口径 Joint Port Size: 06: G1/8" 08: G1/4"
工作压力 Working Pressure: 0.15~0.85MPa



型号 Model: 4V230-06/08 C/E/P
4V200系列电磁阀 / 4V200 Series Solenoid Valve
接管口径 Joint Port Size: 06: G1/8" 08: G1/4"
工作压力 Working Pressure: 0.15~0.85MPa
C: Close Type E: Exhaust Type P: Pressure Type



型号 Model: 4V310-08/10
4V300系列电磁阀 / 4V300 Series Solenoid Valve
接管口径 Joint Port Size: 08: G1/4" 10: G3/8"
工作压力 Working Pressure: 0.15~0.85MPa



型号 Model: 4V320-08/10
4V300系列电磁阀 / 4V300 Series Solenoid Valve
接管口径 Joint Port Size: 08: G1/4" 10: G3/8"
工作压力 Working Pressure: 0.15~0.85MPa



型号 Model: 4V330-08/10 C/E/P
4V300系列电磁阀 / 4V300 Series Solenoid Valve
接管口径 Joint Port Size: 08: G1/4" 10: G3/8"
工作压力 Working Pressure: 0.15~0.85MPa
C: Close Type E: Exhaust Type P: Pressure Type

4V、4M系列电磁阀 / 4V、4M Series Solenoid Valve



型号 Model: 4V410-10/15
4V400系列电磁阀 / 4V400 Series Solenoid Valve
接管口径 Joint Port Size: 10: G3/8" 15: G1/2"
工作压力 Working Pressure: 0.15~0.85MPa



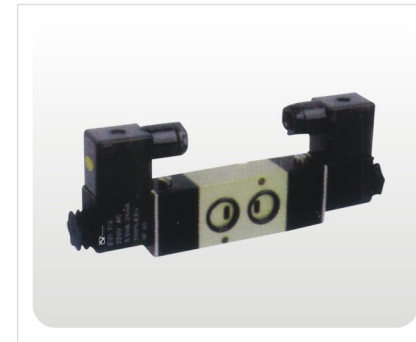
型号 Model: 4V420-10/15
4V400系列电磁阀 / 4V400 Series Solenoid Valve
接管口径 Joint Port Size: 10: G3/8" 15: G1/2"
工作压力 Working Pressure: 0.15~0.85MPa



型号 Model: 4V430-10/15 C/E/P
4V400系列电磁阀 / 4V400 Series Solenoid Valve
接管口径 Joint Port Size: 10: G3/8" 15: G1/2"
工作压力 Working Pressure: 0.15~0.85MPa
C: Close Type E: Exhaust Type P: Pressure Type



型号 Model: 4M210-08
4M200系列板式阀 / 4M200 Series Plate Type Valve
接管口径 Joint Port Size: G3/8"
工作压力 Working Pressure: 0.15~0.85MPa



型号 Model: 4M220-08
4M200系列板式阀 / 4M200 Series Plate Type Valve
接管口径 Joint Port Size: G1/4"
工作压力 Working Pressure: 0.15~0.85MPa



型号 Model: 4M310-10
4M300系列板式阀 / 4M300 Series Plate Type Valve
接管口径 Joint Port Size: G3/8"
工作压力 Working Pressure: 0.15~0.85MPa



型号 Model: 4M320-10
4M300系列板式阀 / 4M300 Series Plate Type Valve
接管口径 Joint Port Size: G3/8"
工作压力 Working Pressure: 0.15~0.85MPa



型号 Model: 4M410-15
4M400系列板式阀 / 4M400 Series Plate Type Valve
接管口径 Joint Port Size: G1/2"
工作压力 Working Pressure: 0.15~0.85MPa



型号 Model: 4M420-15
4M400系列板式阀 / 4M400 Series Plate Type Valve
接管口径 Joint Port Size: G1/2"
工作压力 Working Pressure: 0.15~0.85MPa

4A 系列气控阀 / 4A Series Pneumatic control Valve



型号 Model: 4A110-M5/06
4A100系列气控阀 /
4A100 Series Pneumatic control Valve
接管口径 Joint Port Size: M5: M5x0.8 06: G1/8"
工作压力 Working Pressure: 0.15~0.85MPa



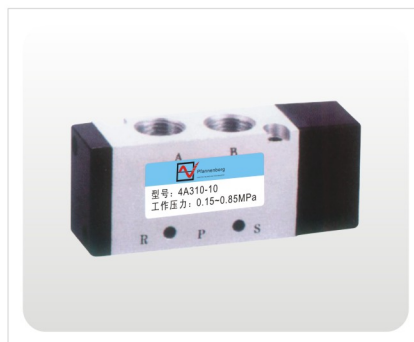
型号 Model: 4A120-M5/06
4A100系列气控阀 /
4A100 Series Pneumatic control Valve
接管口径 Joint Port Size: M5: M5x0.8 06: G1/8"
工作压力 Working Pressure: 0.15~0.85MPa



型号 Model: 4A210-06/08
4A200系列气控阀 /
4A200 Series Pneumatic control Valve
接管口径 Joint Port Size: 06: G1/8" 08: G1/4"
工作压力 Working Pressure: 0.15~0.85MPa



型号 Model: 4A220-06/08
4A200系列气控阀 /
4A200 Series Pneumatic control Valve
接管口径 Joint Port Size: 06: G1/8" 08: G1/4"
工作压力 Working Pressure: 0.15~0.85MPa



型号 Model: 4A310-08/10
4A300系列气控阀 /
4A300 Series Pneumatic control Valve
接管口径 Joint Port Size: 08: G1/4" 10: G3/8"
工作压力 Working Pressure: 0.15~0.85MPa



型号 Model: 4A320-08/10
4A300系列气控阀 /
4A300 Series Pneumatic control Valve
接管口径 Joint Port Size: 08: G1/4" 10: G3/8"
工作压力 Working Pressure: 0.15~0.85MPa



型号 Model: 4A410-10/15
4A400系列气控阀 /
4A400 Series Pneumatic control Valve
接管口径 Joint Port Size: 10: G3/8" 15: G1/2"
工作压力 Working Pressure: 0.15~0.85MPa



型号 Model: 4A420-10/15
4A400系列气控阀 /
4A400 Series Pneumatic control Valve
接管口径 Joint Port Size: 10: G3/8" 15: G1/2"
工作压力 Working Pressure: 0.15~0.85MPa



型号 Model: VF5120
VF 系列电磁阀 / VF Series Solenoid Valve
接管口径 Joint Port Size: G1/4"
工作压力 Working Pressure: 0.2~0.8MPa

电磁阀系列 / Solenoid Valve Series



型号 Model: VF3130
VF 系列电磁阀 / VF Series Solenoid Valve
接管口径 Joint Port Size: G1/4"
工作压力 Working Pressure: 0.2~0.8MPa



型号 Model: VF3230
VF 系列电磁阀 / VF Series Solenoid Valve
接管口径 Joint Port Size: G1/4"
工作压力 Working Pressure: 0.2~0.8MPa



型号 Model: 3V1-06
3V1系列电磁阀 / 3V1 Series Solenoid Valve
接管口径 Joint Port Size: G: 1/8"
工作压力 Working Pressure: 0.15~0.85MPa



型号 Model: 2V025-06
2V系列二位二通电磁阀 /
2V Series Two-position Two-way Solenoid Valve
接管口径 Joint Port Size: G1/8"
工作压力 Working Pressure: 0.2~1.0MPa



型号 Model: 2V130-15
2V系列二位二通电磁阀 /
2V Series Two-position Two-way Solenoid Valve
接管口径 Joint Port Size: G1/2"
工作压力 Working Pressure: 0.2~1.0MPa



型号 Model: 2V130-25
2V系列二位二通电磁阀 /
2V Series Two-position Two-way Solenoid Valve
接管口径 Joint Port Size: G1"
工作压力 Working Pressure: 0.2~1.0MPa



型号 Model: 2231015-14B
二位二通先导型膜片式电磁阀 /
Two-Position Two-Way Diaphragm Solenoid Valve
接管口径 Joint Port Size: G1/2"
工作压力 Working Pressure: 0.2~1.0MPa



型号 Model: 2231008B
二位二通先导型膜片式电磁阀 /
Two-Position Two-Way Diaphragm Solenoid Valve
接管口径 Joint Port Size: G1/4"
工作压力 Working Pressure: 0.2~1.0MPa



型号 Model: 2231050B
二位二通先导型膜片式电磁阀 /
Two-Position Two-Way Diaphragm Solenoid Valve
接管口径 Joint Port Size: G2"
工作压力 Working Pressure: 0.2~1.0MPa

控制阀系列 / Control Valve Series



型号 Model: H23JD-8 / H23JD-15P2
H 系列高压换向阀 /
H Series high pressure commutating valve
接管口径 Joint Port Size: 8: G1/4" 15: G1/2"
工作压力 Working Pressure: 0.15~2.4MPa



型号 Model: 2W025-08
2W(UD)系列电磁阀(小口径) / 2W(UD)Series Two-
position Two Direct Drive Type Solenoid valve
接管口径 Joint Port Size: G1/4"
工作压力 Working Pressure: 0~0.7MPa



型号 Model: 2W-160-40
2W(UD)系列电磁阀(大口径) /
2W(UD)(Large Aperture)Series solenoid Valve
接管口径 Joint Port Size: G1-1/2"
工作压力 Working Pressure: 0~0.7MPa



型号 Model: 2S160-15
2S(UD)系列电磁阀(小口径) /
2S(UD)Series Two Direct Drive Type Solenoid valve
接管口径 Joint Port Size: G1/2"
工作压力 Working Pressure: 0~0.7MPa



型号 Model: JZF-08B/10B/15B/20B/25B
JZF系列角座阀 / JZF Series angle seat valve
接管口径 Joint Port Size: 08B: G1/4" 10B: G3/8"
15B: G1/2" 20B: G3/4" 25B: G1"
工作压力 Working Pressure: 0~1.0MPa



型号 Model: JM-05
JM系列机械阀 / JM Series Mechanical Valve
接管口径 Joint Port Size: G1/4"
工作压力 Working Pressure: 0~0.8MPa



型号 Model: JM-06
JM系列机械阀 / JM Series Mechanical Valve
接管口径 Joint Port Size: G1/4"
工作压力 Working Pressure: 0~0.8MPa



型号 Model: JM-06A
JM系列机械阀 / JM Series Mechanical Valve
接管口径 Joint Port Size: G1/4"
工作压力 Working Pressure: 0~0.8MPa



型号 Model: JM-07
JM系列机械阀 / JM Series Mechanical Valve
接管口径 Joint Port Size: G1/4"
工作压力 Working Pressure: 0~0.8MPa

控制阀系列 / Control Valve Series



型号 Model: MSV 86522
MSV系列机械阀 / MSV Series Mechanical Valve
接管口径 Joint Port Size: G1/4"
工作压力 Working Pressure: 0~0.8MPa



型号 Model: MSV86522TB
MSV系列机械阀 / MSV Series Mechanical Valve
接管口径 Joint Port Size: G1/4"
工作压力 Working Pressure: 0~0.8MPa



型号 Model: MSV 98322
MSV系列机械阀 / MSV Series Mechanical Valve
接管口径 Joint Port Size: G1/4"
工作压力 Working Pressure: 0~0.8MPa



型号 Model: MOV-01
MOV系列机械阀 / MOV Series Mechanical Valve
接管口径 Joint Port Size: G1/8"
工作压力 Working Pressure: 0~0.8MPa



型号 Model: MOV-02
MOV系列机械阀 / MOV Series Mechanical Valve
接管口径 Joint Port Size: G1/8"
工作压力 Working Pressure: 0~0.8MPa



型号 Model: MOV-03
MOV系列机械阀 / MOV Series Mechanical Valve
接管口径 Joint Port Size: G1/8"
工作压力 Working Pressure: 0~0.8MPa



型号 Model: MOV-03A
MOV系列机械阀 / MOV Series Mechanical Valve
接管口径 Joint Port Size: G1/8"
工作压力 Working Pressure: 0~0.8MPa



型号 Model: 4H210-06/08
4H系列手扳阀 / 4H Series Hand-pull Valve
接管口径 Joint Port Size: 06: G1/8" 08: G1/4"
工作压力 Working Pressure: 0.15~0.8MPa



型号 Model: 4H310-08/10
4H系列手扳阀 / 4H Series Hand-pull Valve
接管口径 Joint Port Size: 08: G1/4" 10: G3/8"
工作压力 Working Pressure: 0.15~0.8MPa

控制阀系列 / Control Valve Series



型号 Model: 4H410-10/15
4H系列手扳阀 / 4H Series Hand-pull Valve
接管口径 Joint Port Size: 10: G3/8" 15: G1/2"
工作压力 Working Pressure: 0.15~0.8MPa



型号 Model: TSV86522M
TSV系列手扳阀 / TSV Series Hand-pull Valve
接管口径 Joint Port Size: G1/4"
工作压力 Working Pressure: 0~0.8MPa



型号 Model: TSV98322M
TSV系列手扳阀 / TSV Series Hand-pull Valve
接管口径 Joint Port Size: G1/4"
工作压力 Working Pressure: 0~0.8MPa



型号 Model: HV-02/03/04
HV系列手转阀 / HV Series Hand-switching Valve
接管口径 Joint Port Size: 02: G1/4" 03: G3/8" 04: G1/2"
工作压力 Working Pressure: 0~0.8MPa



型号 Model: HV400-02/03/04
HV系列手转阀 / HV Series Hand-switching Valve
接管口径 Joint Port Size: 02: G1/4" 03: G3/8" 04: G1/2"
工作压力 Working Pressure: 0~0.8MPa



型号 Model: HV200-08
HV系列手转阀 / HV Series Hand-switching Valve
接管口径 Joint Port Size: G1/4"
工作压力 Working Pressure: 0~0.8MPa



型号 Model: K34R8-06/08
K系列手转阀 / K Series Hand-Rotary Valve
接管口径 Joint Port Size: 06: G1/8" 08: G1/4"
工作压力 Working Pressure: 0~0.8MPa



型号 Model: K24R8-06/08
K系列手转阀 / K Series Hand-Rotary Valve
接管口径 Joint Port Size: 06: G1/8" 08: G1/4"
工作压力 Working Pressure: 0~0.8MPa



型号 Model: K34R8-06D/08D
K系列手转阀 / K Series Hand-Rotary Valve
接管口径 Joint Port Size: 06D: G1/4" 08D: G1/8"
工作压力 Working Pressure: 0~0.8MPa

控制阀系列 / Control Valve Series



型号 Model: FV320
FV系列脚踏阀 / FV Series Foot Valve
接管口径 Joint Port Size: G1/4"
工作压力 Working Pressure: 0~0.8MPa



型号 Model: FV420
FV系列脚踏阀 / FV Series Foot Valve
接管口径 Joint Port Size: G1/4"
工作压力 Working Pressure: 0~0.8MPa



型号 Model: 4F210-08G
4F系列脚踏阀 / 4F Series Foot Valve
接管口径 Joint Port Size: G1/4"
工作压力 Working Pressure: 0~0.8MPa



型号 Model: 4F210-08
4F系列脚踏阀 / 4F Series Foot Valve
接管口径 Joint Port Size: G1/4"
工作压力 Working Pressure: 0~0.8MPa



型号 Model: 4F210-08L
4F系列脚踏阀 / 4F Series Foot Valve
接管口径 Joint Port Size: G1/4"
工作压力 Working Pressure: 0~0.8MPa



型号 Model: K23R7-8
K系列脚踏阀 / K Series Foot Valve
接管口径 Joint Port Size: G1/4"
工作压力 Working Pressure: 0~0.8MPa



型号 Model: K25R7-8
K系列脚踏阀 / K Series Foot Valve
接管口径 Joint Port Size: G1/4"
工作压力 Working Pressure: 0~0.8MPa



型号 Model: RE-01/02/03/04
RE系列流量控制阀 / RE Flow Control Valve
接管口径 Joint Port Size: 01: G1/8" 02: G1/4" 03: G3/8" 04: G1/2"
工作压力 Working Pressure: 0.05~1.0MPa

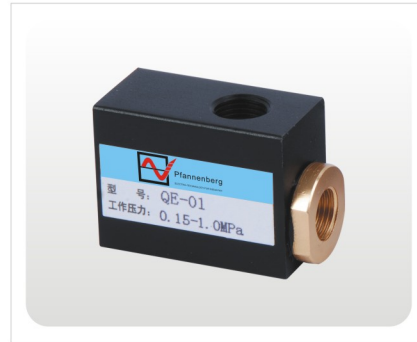


型号 Model: ASC-06/08/10/15
ASC系列流量控制阀 / ASC Flow Control Valve
接管口径 Joint Port Size: 06: G1/8" 08: G1/4" 10: G3/8" 15: G1/2"
工作压力 Working Pressure: 0.05~1.0MPa

控制阀系列 / Control Valve Series



型号 Model: ST-01/02/03/04
ST系列梭阀 / ST Shuttle Valve
接管口径 Joint Port Size: 01: G1/8" 02: G1/4"
03: G3/8" 04: G1/2"
工作压力 Working Pressure: 0~1.0MPa



型号 Model: QE-01/02/03/04
QE系列快速排气阀 / QE Quick Exhaust Valve
接管口径 Joint Port Size: 01: G1/8" 02: G1/4"
03: G3/8" 04: G1/2"
工作压力 Working Pressure: 0.15~1.0MPa



型号 Model: KA-06/08/10/15/20/25
KA系列单向阀 / KA Check Valve
接管口径 Joint Port Size: 06: G1/8" 08: G1/4"
10: G3/8" 15: G1/2"
20: G3/4" 25: G1"
工作压力 Working Pressure: 0.15~1.0MPa



型号 Model: 3R210-08
3R系列手拉阀 / 3R Series Hand-draw Valve
接管口径 Joint Port Size: G1/4"
工作压力 Working Pressure: 0~0.8MPa



型号 Model: 4R210-08
4R系列手拉阀 / 4R Series Hand-draw Valve
接管口径 Joint Port Size: G1/4"
工作压力 Working Pressure: 0~0.8MPa



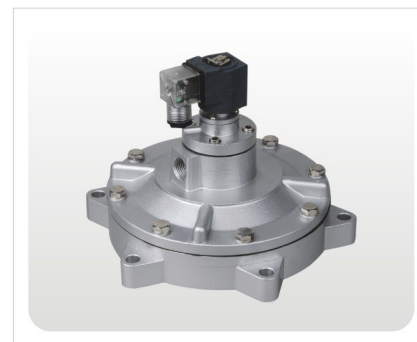
型号 Model: VXF2150-06
VXF系列电磁脉冲阀 / VXF Series Solenoid Pulse Valve
接管口径 Joint Port Size: G1/8"
工作压力 Working Pressure: 0.8MPa



型号 Model: VXF2160-10
VXF系列电磁脉冲阀 / VXF Series Solenoid Pulse Valve
接管口径 Joint Port Size: G3/8"
工作压力 Working Pressure: 0.8MPa

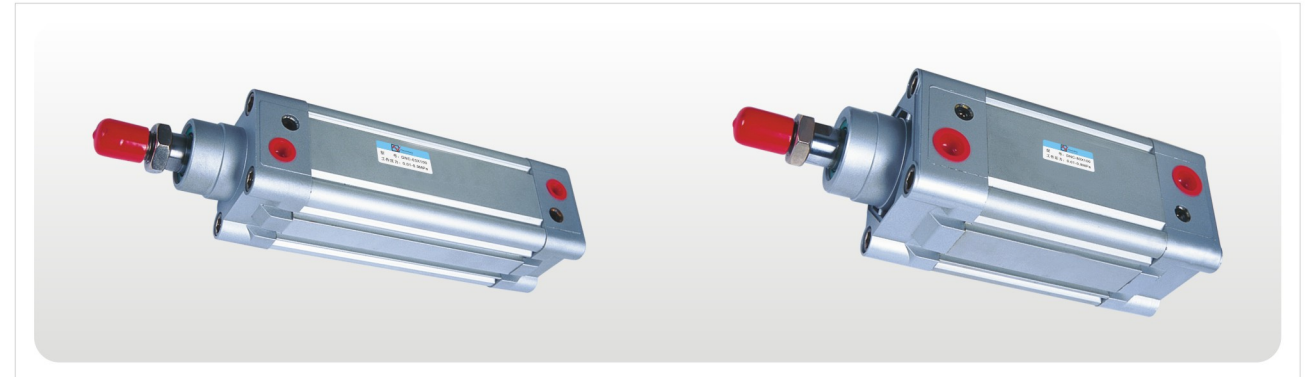


型号 Model: MAC-25/40/50
MCF系列脉冲阀 / MCF Pulse Valve
接管口径 Joint Port Size: 25: G1" 40: G1-1/2"
50: G2"
工作压力 Working Pressure: 0.8MPa



型号 Model: DMF-50/62/76
DMF系列淹没阀 / DMF Flooding Valve
接管口径 Joint Port Size: 50: G2" 62: G2-1/2"
76: G3"
工作压力 Working Pressure: 0.8MPa

气缸系列 / Cylinder Series



DNC - **63** X **50** - **□** - **□** - **□** - **□**

DNC: 标准型
HNC: 轴杆固定型
FNC: 前后法兰型
ZNC: 前后法兰型
ZNCM: 中间轴杆固定型
SNCA: 单耳型
SNCB: 双耳型
DNC: Basic style double acting type
HNC: Axis Direction Foot Base
FNC: Front and Back Flange
ZNC: Front and Back Axis Pin
ZNCM: Middle Axis Pin
SNCA: Single Earring Base
SNCB: Double Earring Base

63: 缸径
Cylinder Bore

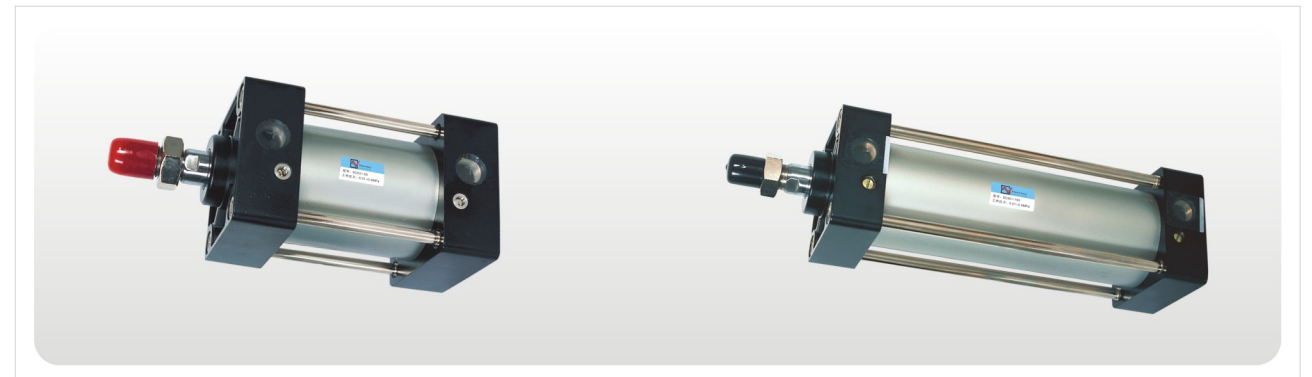
50: 行程
Stroke

□: 缓冲
Buffer
初回: 无缓冲
PPV: 缓冲
Blank: Non Buffer
PPV: Attach Buffer

□: 磁环代码
Magnet Code
初回: 标准型
A: 内部磁环
Blank: Standard Type
A: Inside magnet

□: 加长行程
Especially Lengthen Length

□: 加长活塞杆
K2: 加长活塞杆
K3: 加长活塞杆
K5: 加长活塞杆
K8: 加长活塞杆
S2: Double Piston Rod
S2: Lengthen Out Screw
K3: Front In Screw Thread
K5: OutStandard Screw Thread
K8: LengthenPiston Rod



SC - **D** - **50** X **50** - **25** - **S** - **LB**

SC: 型号/Type
SC: 拉杆式
SU: 拉杆内藏式
SC: Pull Rod Type
SU: Hidden Pull Rod Type

D: 空白: 标准复动型
D: 双轴复动型
J: 双轴可调行程型
Blank: Double Action Acting
D: Double-shaft Double Action
J: Double-shaft and adjustable stroke type

50: 缸径
Cylinder Bore

50: 行程
Stroke

25: SCJ可调行程
SUJ可调行程
SCJ adjustable stroke type
SUJ adjustable stroke type

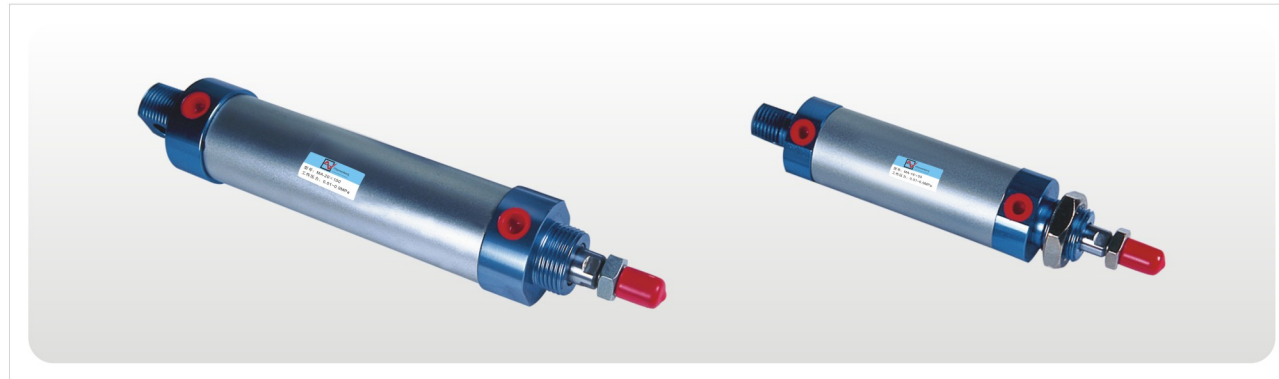
S: 磁石代号
Magnet Code
S: 附磁石
空白: 不附磁石
Blank: Not attach magnet

LB: 固定型式 / Accessory model
空白: 基本型
LB: 前后固定型
FA: 前盖固定型 (前法兰)
FB: 后盖固定型 (后法兰)
CA: 后盖固定型 (单耳环)
CB: 后盖固定型 (双耳环)
TC: 中间摇摆式
TC-M: 摇摆式附脚座
Blank: basic type
LB: front and back fixed type (Fort type)
FA: front cover fixed type (Front flange type)
FB: back cover fixed type (Rear flange type)
CA: back cover fixed type (Single Earring)
CB: back cover fixed type (double Earring)
TC: swinging type
TC-M: swinging type attaching foot seat

气缸系列 / Cylinder Series



MA	-	U	20	X	50	-	25	-	S	-	LB
型号 Type MA: 复动型 MSA: 单动型 MAD: 双轴复 MAJ: 双轴可调型 MA: Double Action MSA: Single-Acting MAD: Double-shaft Double Acting MAJ: Double-shaft and adjust able stroke type		后盖型式 空白: 摆尾型 CM: 圆尾型 U: 平尾型 Back Cover Type Blank: Fishtail type CM: Rounded type U: Horizontal type	缸径 Cylinder Bore		行程 Stroke		MAJ 可调行程 MAJ adjustable strokt Type		磁石代号 空白: 不附磁石 S: 附磁石 Attach magnet Blank: not attach magnet S: attach magnet		固定型式 空白: 基本型 LB: 前后固定型 FA: 前盖固定型 SDB: 后摇摆式 Fixed Type Blank: basic type LB: front and back fixed type FA: front cover fixed type SDB: back cover swinging type



MAL	CA	-	20	X	50	-	25	-	S	-	LB
型号/Type MAL: 复动型 MSAL: 单动型 MALD: 双轴复动型 MALJ: 双轴可调型 MAL: Double Action MSAL: Single-Action MALD: Double-shaft Double Action MALJ: Double-shaft and adjust able stroke type	后盖型式 空白: 摆尾型 CM: 圆尾型 U: 平尾型 Back Cover Type Blank: Fishtail type CM: Rounded type U: Horizontal type		缸径 Cylinder Bore		行程 Stroke		MALJ 可调行程 MALJ adjust-able stroke type		磁石代号 空白: 不附磁石 S: 附磁石 Magnet Code Blank: not Without magnet S: With magnet		固定型式 空白: 基本型 LB: 前后固定型 FA: 前盖固定型 SDB: 后摇摆式 Fixed Type Blank: Basic Type LB: front and back fixed type FA: front cover fixed type SDB: back cover swinging type

气缸系列 / Cylinder Series



SDA	-	20	X	30	-	S	-	B
型号/Type SDA: 复动型 SSA: 单动伸出型 STA: 单动引入型 SDAD: 双轴型 SDA: Double Action SSA: Single Acting Drawing-in Type Extrusion type STA: Single Acting Spring return SDAD: Double-Shaft Type		缸径 Cylinder Bore		行程 Stroke		磁石代号 S: 附磁石 空白: 不附磁石 Magnet Code S: With magnet Blank: Not Attach magnet		牙型 空白: 内螺纹 B: 外螺纹 N: 无螺纹 Cog Type Blank: Standard Type Internal Thread B: External Thread N: NO Thread



CXSM	D	-	20	X	50	-	S	-	LB
型号/Type 平行双出缸 Parallel Double Cylinder	空白: 标准型 D: 双出缸 Blank: Standard Type D: Double Type		缸径 Cylinder Bore		行程 Stroke 20:20 50:50		磁石代号 空白: 不附磁石 S: 附磁石 Magnet Code Blank: not Without magnet S: With magnet		固定型式 空白: 基本型 LB: 前后固定型 FA: 前盖固定型 SDB: 后摇摆式 Fixed Type Blank: Basic Type LB: front and back fixed type FA: front cover fixed type SDB: back cover swinging type

消声器/Silencer

BSL

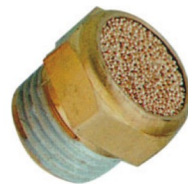
02

Type
B**: Sintered bronze
P**: Plastic
类型
B**: 烧结青铜
P**: 塑料

M5: M5 04: G1/2"
01: G1/8" 06: G3/4"
02: G1/4" 08: 1"
03: G3/8"



型号 / Model	
BSL-M5	BSL-04
BSL-01	BSL-06
BSL-02	BSL-08
BSL-03	



型号 / Model	
BSLM-01	BSLM-04
BSLM-02	BSLM-06
BSLM-03	BSLM-08



型号 / Model	
BESLC-01	BESLC-04
BESLC-02	BESLC-06
BESLC-03	BESLC-08



型号 / Model	
BESLD-01	BESLD-04
BESLD-02	BESLD-06
BESLD-03	BESLD-08



型号 / Model	
BSLE-01	BSLE-04
BSLE-02	BSLE-06
BSLE-03	BSLE-08



型号 / Model	
BESL-01	BESL-04
BESL-02	BESL-06
BESL-03	BESL-08



型号 / Model	
BSLD-01	BSLD-04
BSLD-02	BSLD-06
BSLD-03	BSLD-08

Plastic silencer with particle inside



型号 / Model	
PSL-01	
PSL-02	
PSL-03	
PSL-04	

Plastic silencer with filter core inside



型号 / Model	
SPL-F-6	
SPL-F-8	
SPL-F-10	
SPL-F-15	

吹尘枪系列/Air Gun Series



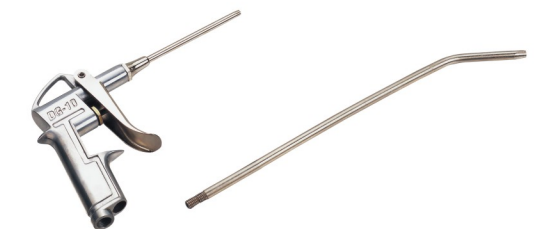
CCQ-83



CCQ-85



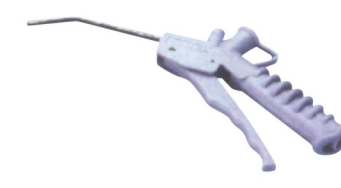
CCQ-10-3



CCQ-10-5



SG-B-S 喷嘴型/Short



SG-B-M 标准型/Standard



SG-B-L 加长型/Long



气管剪 Tube Cutter



PU 螺旋管/PU Spiral Pipe



快插式气动管接头/ Quick Connecting Tube Fittings

◆ QPC 螺纹直通



◆ QPOC 圆螺纹直通



◆ QPCF 内螺纹直通



◆ QPMF 隔板内螺纹直通



◆ QPPF 管帽



◆ QPOC-G 圆螺纹直通-G螺纹



◆ QPL L型螺纹弯头



◆ QPV 塑料弯头



◆ QPLL 加长L型螺纹弯头



◆ QPLN 新螺纹弯头



◆ QPLF 内螺纹弯头



◆ QPLM 隔板弯头



◆ QPXG 塑料Y五通



◆ QPXJ 插入型Y五通



◆ QPXT Y型螺纹五通



◆ QPKJ 插入型五通



◆ QPKD 螺纹五通



◆ QPK 塑料五通



快插式气动管接头/ Quick Connecting Tube Fittings

◆ QPHT(3) 串联直角(3)



◆ QPZ 塑料四通



◆ QPU 塑料直通



◆ QPD 螺纹侧三通



◆ QPX Y型螺纹三通



◆ QPH 外六角接头



◆ QPHT(2) 串联直角(2)



◆ QPHF 串联接头



◆ QPYJ 插入型Y三通



◆ QPE 塑料正三通



◆ QPLL-G 加长L型螺纹弯头-G螺纹



◆ QPDJ 插入型侧三通



◆ QPXT-G Y型螺纹五通-G螺纹



◆ QPGT-G 外六角双向接头-G螺纹



◆ QPHT-G(2) 串联直角(2)-G螺纹



◆ QPX-G Y型螺纹三通-G螺纹



◆ QPHT-G(3) 串联直角(3)-G螺纹



◆ QPB 螺纹正三通

